



KUMIITA®

Instructions manual
<https://kumiita.com/eng/>



ICON Corp.
 13-19, Daimachi, Kanagawa-ku, Yokohama-shi,
 Kanagawa, 221-0834, Japan 221-0834
<http://www.e-icon.co.jp/>
<https://kumiita.com/>
 Product Inquiries : ICON Customer Service
 E-mail : support@kumiita.com
 Telephone No. : 045-548-8581
 Telephone Service Hours : 10:00-12:00/13:00-17:00(Monday -Friday
 excepting New Year's Holidays.) *Phone charges apply.

Warranty Period: 6 months from date of purchase.
 Defects and Repairs
 ICON Customer Service
 13-19, Daimachi, Kanagawa-ku, Yokohama-shi, Kanagawa,
 221-0834, Japan 221-0834
 *Please enclose your address, full name, telephone number,
 purchase date & place, and a memo stating the defective part
 when sending product in for repair.
 *Customer service is available only for the products sold or used in Japan.

Returns or exchanges will not be accepted in the following cases. *Returns are limited to unopened products.
 ●There is no communication by e-mail or telephone within seven days after product arrival. ●Products scratched or damaged by the customer.
 ●Product packaging, instruction manuals, parts, etc. are dirtied, broken, missing, or damaged. ●Product has been disassembled by the customer.
 ●Returned product differs in color, shape, thickness, size, logic or melody. ●Sale items, inventory closeout items or imperfect items.
 ●Purchase date or purchase location is not known. ●Other reasons not warranting returns or exchanges.

*Thank you very much for your purchase. We are making every effort to maintain high quality control, so if you have any comments, please contact us. *We are constantly researching and improving quality in order to deliver better products to our customers. Please note product may slightly differ from pictures and illustrations.

Warning

For Parents and Guardians. Please read.

Carefully read the instruction manual before use.
 Safely store the instruction manual and package.

Caution

●Carefully read the instruction manual before use. Safely store the instruction manual and package. ●May be dangerous for unattended children. For use with adult supervision only. ●Please keep this product out of reach for children under 3 years old. ●For safety, check product for damage or deformations. Do not let children play with damaged or deformed toys. ●Throw away plastic packaging materials immediately after opening. Do not cover or wear plastic bags on the head. There is a danger of suffocation. ●Do not put product in water or fire. Do not disassemble or solder product. ●Small magnets are imbedded in the panels. For safety, check panels for damage or deformations. Do not let children use damaged or deformed panels. ●Product uses LED lights. Do not use for a long time near eyes. ●Keep product away from sunlight, areas of high humidity, and areas of extreme high and low temperatures. ●Battery replacement must be done by an adult.

«Using batteries incorrectly may cause overheating, rupturing, or liquid leakage. Please note the following.»

●Never use rechargeable batteries. ●Do not mix old and new batteries, or various types of batteries. ●Please set + - (plus and minus) correctly.
 ●After playing, switch off product and remove the batteries. ●Do not short circuit, charge, disassemble, heat, or put in fire. ●In case of battery liquid leakage, wash with large amounts of water then immediately consult a doctor. Please wash with water when in contact with skin or clothing. ●When disposing, please follow your local municipal waste disposal instructions.



おとなといっしょ
 Adult supervision
 required



くちくちしない
 Do not put in
 mouth



みずにあらさない
 Do not get wet

<Usage Notes>

●Check product upon arrival.

Unexpected accidents, breakage or damage may occur. Please pay attention to the following:

●When KUMIITA becomes dirty, wipe with a well squeezed, damp towel. Do not use detergents or alcohol. ●Do not wipe this product with wet tissues containing alcohol, chemicals, etc. as there may be discoloration. ●Panels are made specifically for KUMIITA. Do not use with other toys or items. Play using intended purpose only. ●Do not place any weight on KUMIITA. ●When opening / closing the body, keep hair, fingers, etc. off moving parts so they do not get caught. ●Do not use in unstable places or places where there is a danger of falling. Use on a flat place indoors. ●Do not drop, hit, wave around or use in a forceful manner. ●Do not use or store near fire or heating equipment. ●Product is not waterproof. Do not get wet. ●If product is damaged or defective, stop using immediately. ●This product is assembled with precision parts. Never disassemble. ●Do not lick the product or use with wet hands. ●If KUMIITA does not move when placed on the Start Panel with the power switch turned ON, please check that the battery is set correctly. If there is no improvement, replace with new batteries and check again. ●Please do not spill food or drinks on product. The inside will become corroded and in some cases cannot be repaired. ●Because of the nature of the product, the panels may become scratched by friction, etc. This may cause KUMIITA to produce unnatural movement, or sounds or lighting may stop functioning. ●Do not hit or impact during automatic movement. This may cause damage or the product to malfunction.

Special Attention :

●In case of a malfunction, switch the power OFF to reset the unit. If there is no improvement, replace the batteries. ●When the batteries run low, sounds may become difficult to hear or will not function properly. Replace with new batteries.

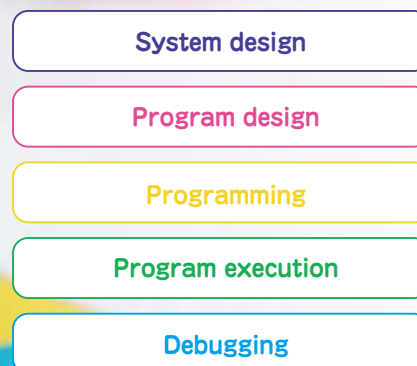
Hi! I'm KUMIITA.

With so many educational toys available, we thank you for choosing KUMIITA.

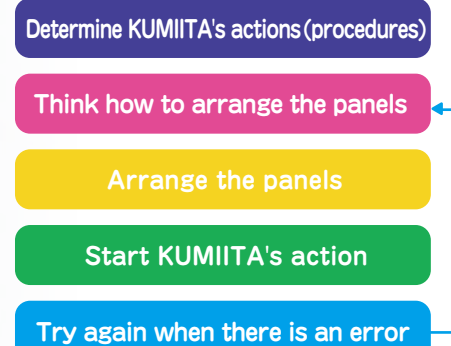
KUMIITA is a toy that lets you learn the basics of computer programming through play. KUMIITA is very easy to play. Arrange the panels and guide KUMIITA to the goal for a big success! If you get an error, rearrange the panels and try again.

With the assortment of colorful panels, KUMIITA will move, spin, light up and make sounds for endless combinations of fun. Watch the growth of your child as you have fun arranging the panels together!

Programming Elements

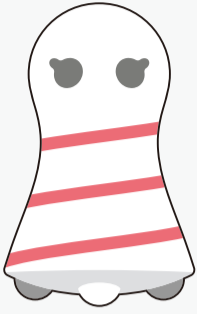


KUMIITA Programming Elements



Contents

KUMIITA x1



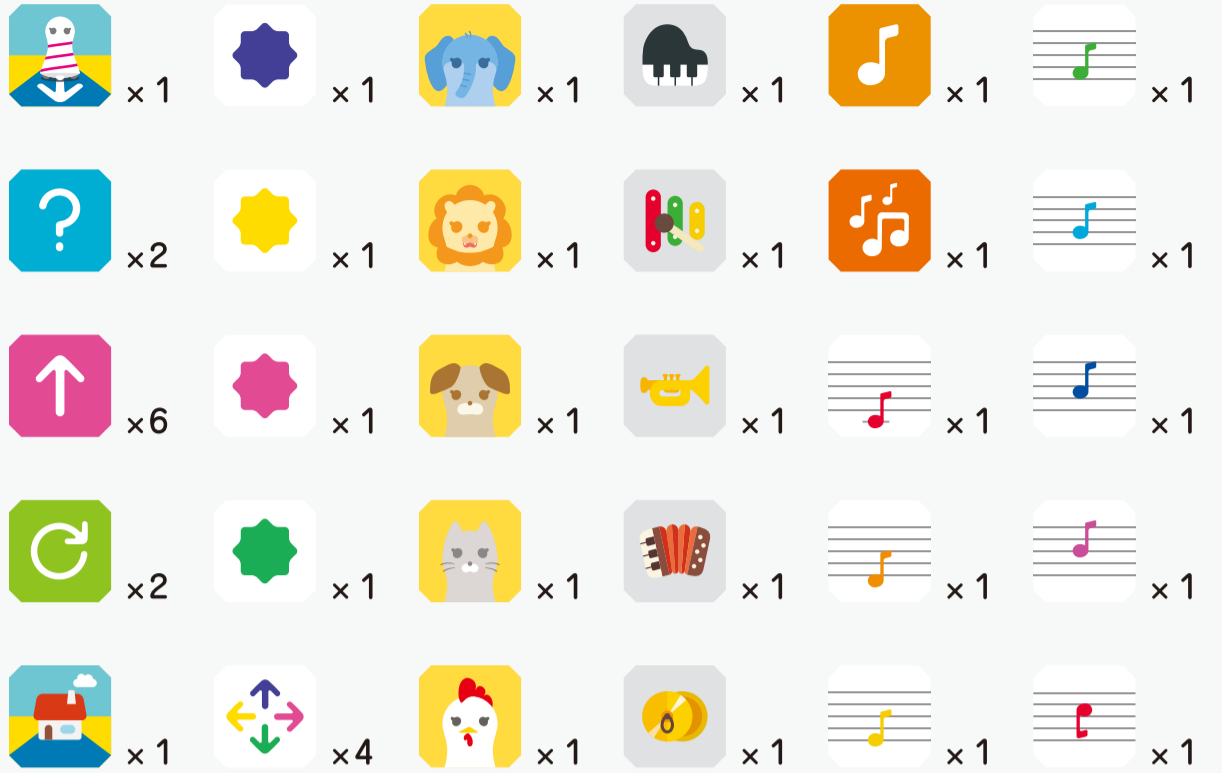
Instruction Manual x1



Play Guide x1



Panel x40



KUMIITA Specifications	Size: Approx. 80mm x 122mm Weight: Approx. 200g
Panel Specifications (each)	Size: Approx. 120mm x 120mm x 5mm Weight: Approx. 54g

Getting Set Up

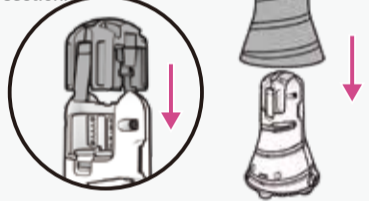
<Replacing the Battery>

① Use a Phillips head screwdriver to unscrew (in the direction of the arrow) the screw located on the bottom of KUMIITA.

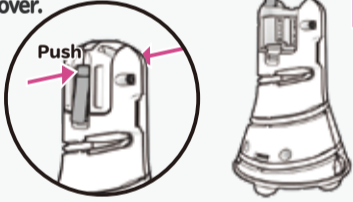
*Make sure the power is switched OFF before replacing the batteries.
*Only adults should replace the batteries.
*Alkaline batteries only. Sold separately.



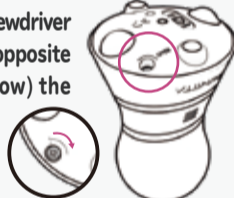
④ Having inserted the batteries, close the battery cover and replace the outside section.



② Push the battery cover releases on the inside section and remove the battery cover.

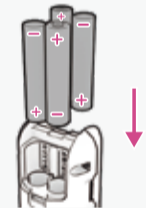


⑤ Use a Phillips head screwdriver to screw back in (the opposite direction of the arrow) the screw located on the bottom of KUMIITA.



③ Insert 4 alkaline batteries (sold separately) as shown.

*KUMIITA will operate for about 6 hours under continuous use.



<Switching Power ON / OFF>

Turn the power to ON using the power switch.

*When KUMIITA is inactive for 3 minutes, the power will automatically turn off. Switch the power to OFF before switching to ON again.

*When the batteries are low, KUMIITA will flash yellow and red and will also sound an alarm.



[Sound Volume Switch]
The volume switch is inset. Use a pin or thin object to adjust.

The Panels



Start
Here we go! The adventure starts with the go signal! With the start tone, KUMIITA will move in the direction of the arrow.



Goal
KUMIITA loves reaching the goal! KUMIITA plays a fanfare, blinking blue, red, green and yellow.



Go
KUMIITA moves in the direction of the arrow. Enjoy the adventure arranging panels where you want KUMIITA to go.



Spin
KUMIITA spins clockwise one time and moves happily on.



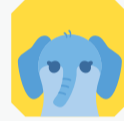
Color Change (blue, red, green, yellow)
Choose from blue, yellow, red and green. KUMIITA's stripes will glow the same color!



Color Node
KUMIITA moves in the same direction as the color of its stripes. Try arranging the panels to have KUMIITA go different directions.



Instrument (piano, xylophone, trumpet, accordion, cymbal)
KUMIITA plays the sound of the pictured instrument. When followed by a Note Panel, the tone will change. Arrange Note Panels for a fun performance!



Animal (elephant, lion, cat, chicken)
KUMIITA makes the sound of the pictured animal. Enjoy all the animal sounds!



Music Note (one for each note)
KUMIITA plays the do, re, mi, fa, so, la, ti, do (one octave higher) notes. The notes change with the Instrument Panels. Play your own melody with KUMIITA!



Music Replay (1 time, 3 times)
KUMIITA replays the notes it has passed over when coming to this panel. One replay for a single note Note Panel, and a triple replay for the three note Note Panel. After the performance, KUMIITA goes happily on its way. Repeat your favorite sounds with this panel.



Random
A mysterious panel that chooses a Color Change, Instrument or Animal Panel. What will happen? Try it and find out!

How to Play

How should I place them?

1 Place the panels however you like to make KUMIITA go from the Start to the Goal!

I say my name when switched on!

2 Switch KUMIITA ON!

Leaving the Start Panel!

3 Place KUMIITA on the Start Panel and KUMIITA is ready to go!

One spin here!

4 KUMIITA executes the commands on the panels in order. Enjoy trying all of KUMIITA's actions!

I turn red and make sounds if there is an error.

5 If there is an error, rearrange the panels and try again from the start!

I made it home! You did it!

6 Make it to the Goal Panel for a big success!

Adjusting the Volume

With the power ON, you can adjust the volume on KUMIITA by passing the bottom over these Quiet, Normal and Loud symbols here:

Quiet



Medium



Loud



*The volume can also be adjusted using the volume switch located on the bottom of KUMIITA.

The volume adjust symbols above will not work with a print-out or digital version of this PDF. For use only with the original instruction manual included product.

